



MLS 7062772 Commercial

\$1

26468 US 71
Park Rapids MN 56470

(Active)

Description:

Online-only real estate auction featuring prime commercial property located just 10 miles north of Park Rapids, MN. 23± acres offered in 3 parcels (formerly Evergreen Fun Park). Auction opens Saturday, May 23 and begins closing Thursday, May 28 at 12 PM. Versatile property with multiple potential uses including restaurant/bar, office, retail, event space, building sites, or camping. All parcels have been surveyed. Lot 1 (Parcel C): 3.42± acres, nicely wooded. Includes a large commercial building with basement, additional storage buildings, and updated exterior restroom facility. Well and septic in place. Kitchen equipment not included but available for purchase. Lot 2 (Parcel D): 7.07± acres, partially wooded. Features a 30x88 + 16x22 steel-sided building with heated shop, concrete floor, and cold storage. Additional improvements include a go-kart track, 32x56 open-sided pole building, and bumper pool area. Private well, electricity, and 3-phase power available.

Lot 3 (Parcels A & B): 13.15± acres, fully wooded. Established camper sites with electric in a park-like setting. Visit the auction site for terms and online bidding.

Additional Details:

Taxes (unreported)
Taxes with Assessments (unreported)

Driving Directions:



Listed By:
Counselor Realty Detroit Lakes

Affinity Real Estate Inc. participates in the Regional Multiple Listing Service of Minnesota, Inc Broker Reciprocity (sm) program, allowing us to display other broker's listings on our website. All properties are subject to prior sale, change or withdrawal.



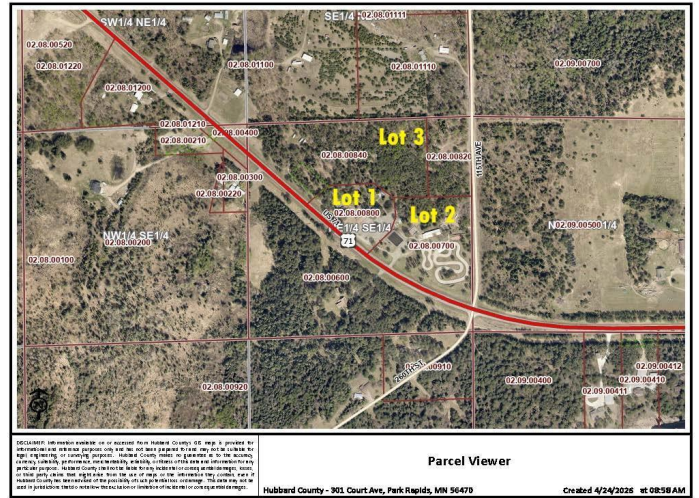
Call Affinity Real Estate

218-237-3333

info@affinityrealestate.com



Affinity Real Estate - 600 Park Avenue South - Park Rapids MN 56470



website: www.AffinityRealEstate.com | email: info@affinityrealestate.com | office: 218-237-3333 | fax: 218-237-3377



\$1
MLS 7062772 Commercial
26468 US 71
Park Rapids MN 56470



website: www.AffinityRealEstate.com | email: info@affinityrealestate.com | office: 218-237-3333 | fax:218-237-3377

Affinity
REAL ESTATE INC

\$1
MLS 7062772 Commercial
26468 US 71
Park Rapids MN 56470



website: www.AffinityRealEstate.com | email: info@affinityrealestate.com | office: 218-237-3333 | fax:218-237-3377



\$1
MLS 7062772 Commercial
26468 US 71
Park Rapids MN 56470



website: www.AffinityRealEstate.com | email: info@affinityrealestate.com | office: 218-237-3333 | fax:218-237-3377

Affinity
REAL ESTATE INC

\$1
MLS 7062772 Commercial
26468 US 71
Park Rapids MN 56470



website: www.AffinityRealEstate.com | email: info@affinityrealestate.com | office: 218-237-3333 | fax:218-237-3377



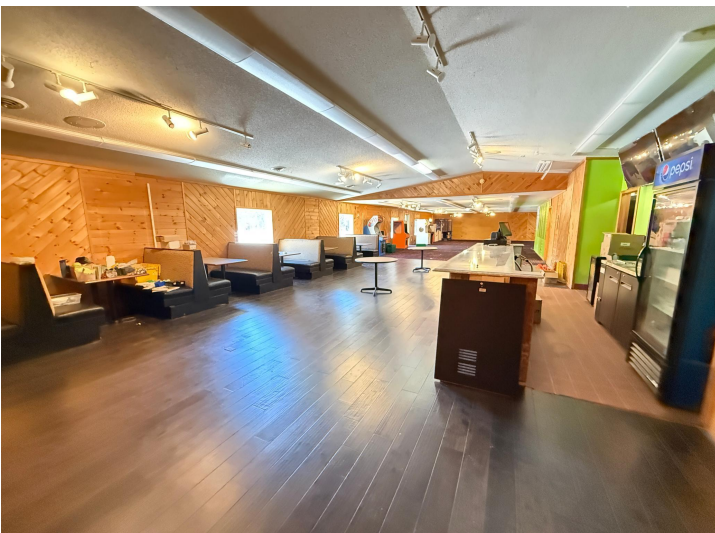
\$1
MLS 7062772 Commercial
26468 US 71
Park Rapids MN 56470



website: www.AffinityRealEstate.com | email: info@affinityrealestate.com | office: 218-237-3333 | fax:218-237-3377

Affinity
REAL ESTATE INC

\$1
MLS 7062772 Commercial
26468 US 71
Park Rapids MN 56470



website: www.AffinityRealEstate.com | email: info@affinityrealestate.com | office: 218-237-3333 | fax:218-237-3377



\$1
MLS 7062772 Commercial
26468 US 71
Park Rapids MN 56470



website: www.AffinityRealEstate.com | email: info@affinityrealestate.com | office: 218-237-3333 | fax:218-237-3377

Affinity
REAL ESTATE INC

\$1
MLS 7062772 Commercial
26468 US 71
Park Rapids MN 56470



website: www.AffinityRealEstate.com | email: info@affinityrealestate.com | office: 218-237-3333 | fax:218-237-3377



\$1
MLS 7062772 Commercial
26468 US 71
Park Rapids MN 56470