



MLS 7056158 Commercial

\$430,000

8525 State 371 NW
Walker MN 56484

(Active)



Description:

Unlock the potential of this 2,880 square foot commercial building set on 3.09 acres along Highway 371 with frontage road just north of Walker. Once an auto body shop, it still features copper air lines around the perimeter for compressor use, and multiple 220 outlets, A separate office with a sink adds convenience for daily operations. There is also a 1,248 square foot apartment that adds flexibility, offering 2 bedrooms, a 3/4 bath, kitchenette, laundry, office, off peak electric in floor heat, propane wall heater, and an attached 2 car garage. Separate meters serve the shop and apartment. Roofs were replaced on both buildings in 2018. There is also an insulated semi trailer for additional storage. The property offers ample exterior space for parking, equipment or expansion. This commercial site is the perfect spot for your business with room to grow in a high-visibility corridor.

Additional Details:

Taxes (unreported)
Taxes with Assessments (unreported)

Driving Directions:



Listed By:
Edina Realty, Inc.

Affinity Real Estate Inc. participates in the Regional Multiple Listing Service of Minnesota, Inc Broker Reciprocity (sm) program, allowing us to display other broker's listings on our website. All properties are subject to prior sale, change or withdrawal.



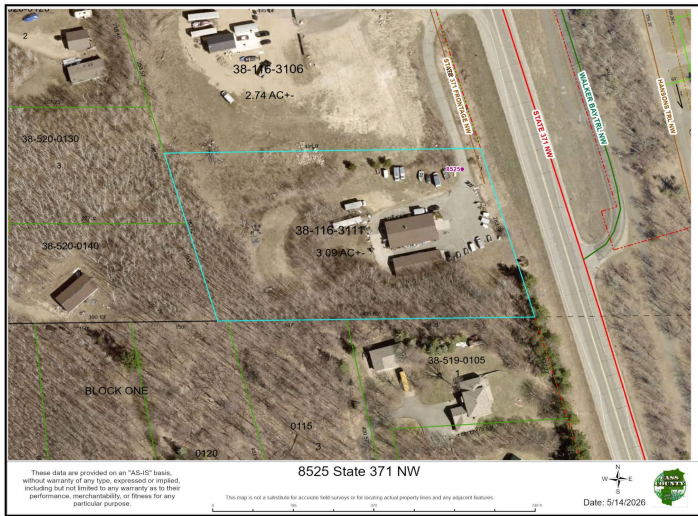
Call Affinity Real Estate

218-237-3333

info@affinityrealestate.com



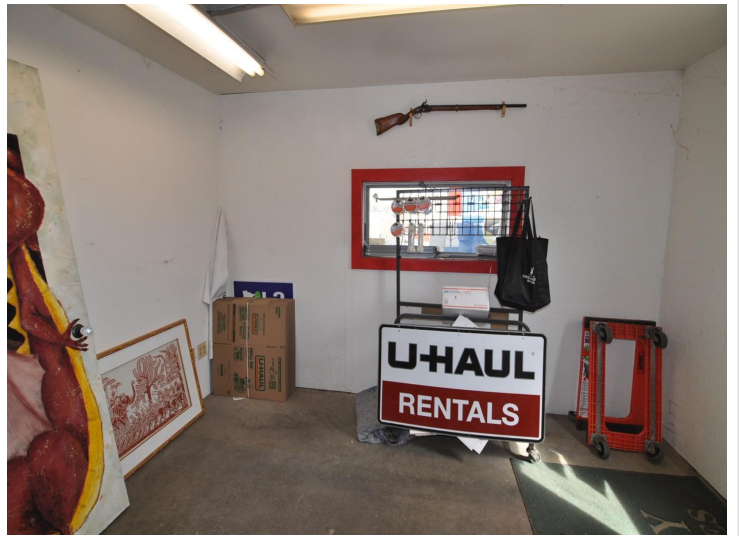
Affinity Real Estate - 600 Park Avenue South - Park Rapids MN 56470



website: www.AffinityRealEstate.com | email: info@affinityrealestate.com | office: 218-237-3333 | fax: 218-237-3377



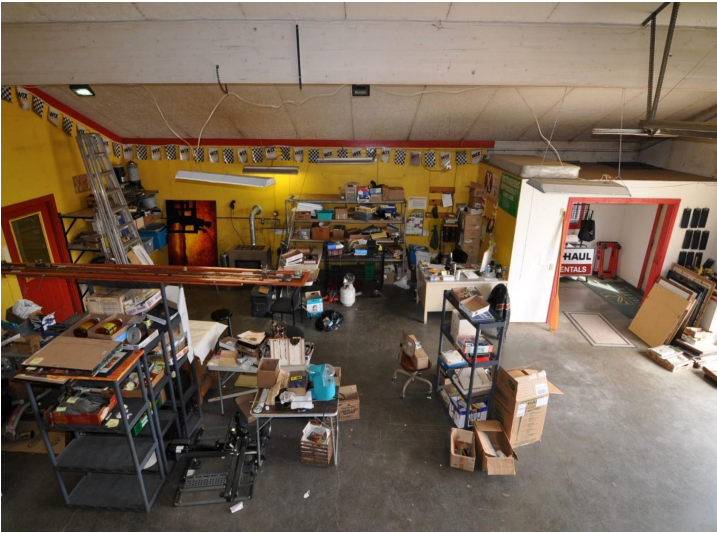
\$430,000
 MLS 7056158 Commercial
 8525 State 371 NW
 Walker MN 56484



website: www.AffinityRealEstate.com | email: info@affinityrealestate.com | office: 218-237-3333 | fax:218-237-3377



\$430,000
MLS 7056158 Commercial
8525 State 371 NW
Walker MN 56484



website: www.AffinityRealEstate.com | email: info@affinityrealestate.com | office: 218-237-3333 | fax:218-237-3377



\$430,000
MLS 7056158 Commercial
8525 State 371 NW
Walker MN 56484



website: www.AffinityRealEstate.com | email: info@affinityrealestate.com | office: 218-237-3333 | fax: 218-237-3377

Affinity
REAL ESTATE INC

\$430,000
MLS 7056158 Commercial
8525 State 371 NW
Walker MN 56484



website: www.AffinityRealEstate.com | email: info@affinityrealestate.com | office: 218-237-3333 | fax:218-237-3377



\$430,000
MLS 7056158 Commercial
8525 State 371 NW
Walker MN 56484



website: www.AffinityRealEstate.com | email: info@affinityrealestate.com | office: 218-237-3333 | fax:218-237-3377



\$430,000
MLS 7056158 Commercial
8525 State 371 NW
Walker MN 56484