



MLS 6774450 Commercial

\$449,900

23941 County Road 123
Osage MN 56570

(Active)

Description:

Exciting rental opportunity. This well maintained 4-plex offers three inviting 2-bedroom, 1-bath units alongside a cozy 1-bedroom, 1-bath unit. Each residence boasts its own dedicated utilities, with the convenience of a coin-operated washer and dryer in the shared common area. The current owner has thoughtfully updated all units, ensuring a modern and comfortable living experience. Perfectly situated just minutes from the serene Straight Lake, downtown Osage, and charming Park Rapids, this property is an ideal place to call home!

Additional Details:

Taxes (unreported)
Taxes with Assessments (unreported)

Driving Directions:



Listed By:
Wolff & Simon Real Estate

Affinity Real Estate Inc. participates in the Regional Multiple Listing Service of Minnesota, Inc Broker Reciprocity (sm) program, allowing us to display other broker's listings on our website. All properties are subject to prior sale, change or withdrawal.



Call Affinity Real Estate

218-237-3333

info@affinityrealestate.com

MLS



Affinity Real Estate - 600 Park Avenue South - Park Rapids MN 56470



website: www.AffinityRealEstate.com | email: info@affinityrealestate.com | office: 218-237-3333 | fax: 218-237-3377



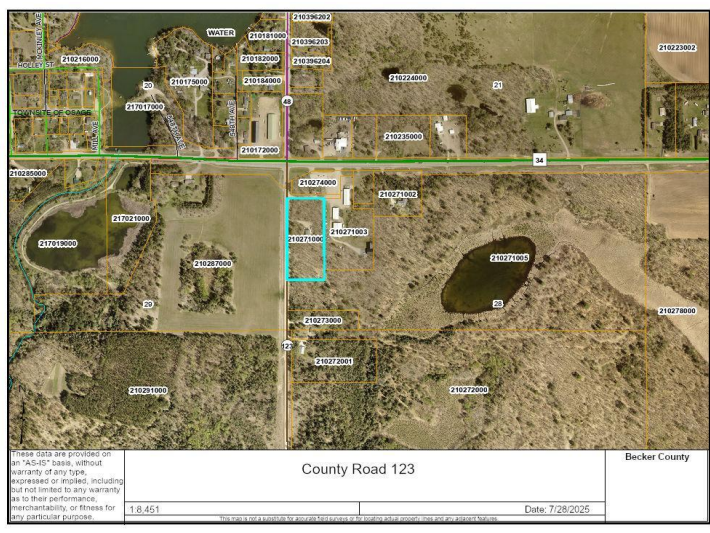
\$449,900
 MLS 6774450 Commercial
 23941 County Road 123
 Osage MN 56570



website: www.AffinityRealEstate.com | email: info@affinityrealestate.com | office: 218-237-3333 | fax: 218-237-3377



\$449,900
 MLS 6774450 Commercial
 23941 County Road 123
 Osage MN 56570



website: www.AffinityRealEstate.com | email: info@affinityrealestate.com | office: 218-237-3333 | fax:218-237-3377



\$449,900
MLS 6774450 Commercial
23941 County Road 123
Osage MN 56570