



MLS 6724738 Commercial

\$249,000

2.74 AC MN-371
Walker MN 56484

(Active)

Description:

Prime commercial opportunity on MN-371 in Walker! Take advantage of this exceptional chance to own a spacious pole building on valuable commercial acreage along the high-visibility MN-371 corridor. This versatile property features a large drive-in door—perfect for office, service, or storage use. Whether you're looking to launch, relocate, or expand your business, this affordable property offers the space and location to help you grow in the thriving Walker area.

Additional Details:

Taxes (unreported)
Taxes with Assessments (unreported)

Driving Directions:



Listed By:
Close-Converse Commercial Prop

Affinity Real Estate Inc. participates in the Regional Multiple Listing Service of Minnesota, Inc Broker Reciprocity (sm) program, allowing us to display other broker's listings on our website. All properties are subject to prior sale, change or withdrawal.



Call Affinity Real Estate
218-237-3333
info@affinityrealestate.com



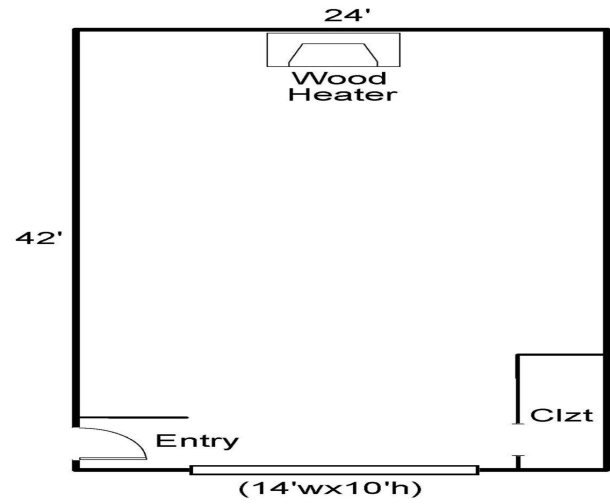
Affinity Real Estate - 600 Park Avenue South - Park Rapids MN 56470



website: www.AffinityRealEstate.com | email: info@affinityrealestate.com | office: 218-237-3333 | fax: 218-237-3377



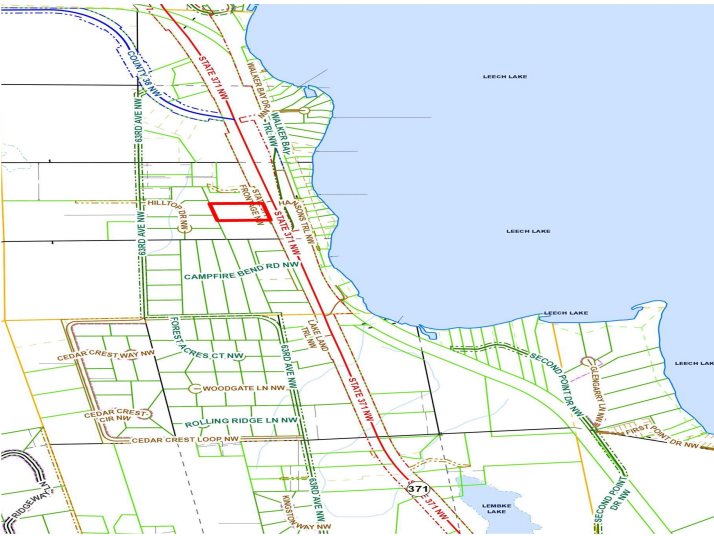
\$249,000
 MLS 6724738 Commercial
 2.74 AC MN-371
 Walker MN 56484



website: www.AffinityRealEstate.com | email: info@affinityrealestate.com | office: 218-237-3333 | fax: 218-237-3377

Affinity
REAL ESTATE INC

\$249,000
MLS 6724738 Commercial
2.74 AC MN-371
Walker MN 56484



website: www.AffinityRealEstate.com | email: info@affinityrealestate.com | office: 218-237-3333 | fax: 218-237-3377



\$249,000
 MLS 6724738 Commercial
 2.74 AC MN-371
 Walker MN 56484