



MLS 6585183 Commercial

**\$109,900**

25174 Co Hwy 6  
Detroit Lakes MN 56501

(Active)

**Description:**

30' X 48' STORAGE UNIT IN PRIME LOCATION. These units consist of top grade materials & superior construction: 2x6 construction on concrete slab w/ footings, 16W'x14H' - 2\" energy saver overhead door, electric opener, 200 amp electric panel, shared insulated/lined walls, steel wainscot around building, 4' apron AND ASPHALT. Owners have exclusive access to wash bay & private club house - equipped w 2 baths, kitchenette, lounge seating, high top tables, 2 tv's, gas fireplace, deck & crows nest gathering space. \$600 annual association fee includes use of club house, wash bay, snow removal & mowing. UNIT #105

**Additional Details:**

Taxes (unreported)  
Taxes with Assessments (unreported)

**Driving Directions:**



Listed By:  
Re/Max Lakes Region

Affinity Real Estate Inc. participates in the Regional Multiple Listing Service of Minnesota, Inc Broker Reciprocity (sm) program, allowing us to display other broker's listings on our website. All properties are subject to prior sale, change or withdrawal.



**Call Affinity Real Estate**

**218-237-3333**

**info@affinityrealestate.com**



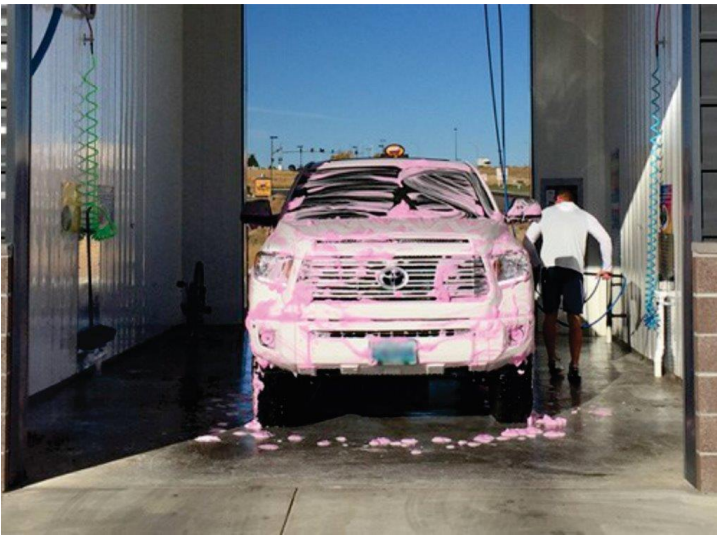
**Affinity Real Estate - 600 Park Avenue South - Park Rapids MN 56470**



website: [www.AffinityRealEstate.com](http://www.AffinityRealEstate.com) | email: [info@affinityrealestate.com](mailto:info@affinityrealestate.com) | office: 218-237-3333 | fax:218-237-3377



**\$109,900**  
MLS 6585183 Commercial  
25174 Co Hwy 6  
Detroit Lakes MN 56501



website: [www.AffinityRealEstate.com](http://www.AffinityRealEstate.com) | email: [info@affinityrealestate.com](mailto:info@affinityrealestate.com) | office: 218-237-3333 | fax:218-237-3377



**\$109,900**  
MLS 6585183 Commercial  
25174 Co Hwy 6  
Detroit Lakes MN 56501