



MLS 6523241 Commercial

\$265,000

29506 Patriot Avenue
Pequot Lakes MN 56472

(Pending)

Description:

Excellent opportunity to locate your business amidst a vibrant community where commerce meets convenience. This versatile commercial building has two large open showrooms, each equipped with a drive-in door, in addition to numerous storage rooms and ample workspace. With its Patriot Ave frontage, you're poised to tap into a thriving market fueled by both locals and tourists, making it the perfect location for amplifying your business endeavors.

Additional Details:

Taxes (unreported)
Taxes with Assessments (unreported)

Driving Directions:



Listed By:
Close-Converse Commercial Prop

Affinity Real Estate Inc. participates in the Regional Multiple Listing Service of Minnesota, Inc Broker Reciprocity (sm) program, allowing us to display other broker's listings on our website. All properties are subject to prior sale, change or withdrawal.



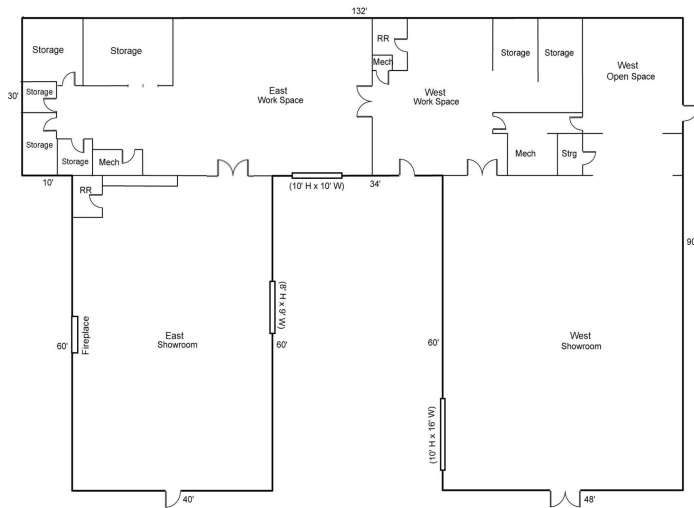
Call Affinity Real Estate

218-237-3333

info@affinityrealestate.com



Affinity Real Estate - 600 Park Avenue South - Park Rapids MN 56470



website: www.AffinityRealEstate.com | email: info@affinityrealestate.com | office: 218-237-3333 | fax: 218-237-3377

Affinity
REAL ESTATE INC

\$265,000
MLS 6523241 Commercial
29506 Patriot Avenue
Pequot Lakes MN 56472



website: www.AffinityRealEstate.com | email: info@affinityrealestate.com | office: 218-237-3333 | fax: 218-237-3377



\$265,000
 MLS 6523241 Commercial
 29506 Patriot Avenue
 Pequot Lakes MN 56472



website: www.AffinityRealEstate.com | email: info@affinityrealestate.com | office: 218-237-3333 | fax: 218-237-3377



\$265,000
 MLS 6523241 Commercial
 29506 Patriot Avenue
 Pequot Lakes MN 56472



website: www.AffinityRealEstate.com | email: info@affinityrealestate.com | office: 218-237-3333 | fax: 218-237-3377



\$265,000
MLS 6523241 Commercial
29506 Patriot Avenue
Pequot Lakes MN 56472



website: www.AffinityRealEstate.com | email: info@affinityrealestate.com | office: 218-237-3333 | fax: 218-237-3377



\$265,000
 MLS 6523241 Commercial
 29506 Patriot Avenue
 Pequot Lakes MN 56472