



MLS 6520698 Commercial

**\$515,000**

18894 Estate Drive  
Park Rapids MN 56470

Waterfront: Unnamed Lake

(Active)

**Description:**

Invest in a 5 unit apartment building overlooking a lake on over 10 acres of land! This property is less than 3 minutes to Park Rapids and just north of Long Lake, overlooking Mud Lake. Fabulous setting! The 2 buildings contain 5 separate units. Two of the units are 3 bedroom, 2 bath units. One is a main level unit and the other 3 bedroom is an upper level unit. There are also 3 units that have 2 bedrooms and 1 bath. Of these 2 bedroom units, two of them are upper level and one is lower. All have many recent updates and are in very nice condition. Always full, there is a huge demand for rentals in the area.

**Additional Details:**

Taxes (unreported)  
Taxes with Assessments (unreported)

**Driving Directions:**



Listed By:  
Keller Williams Realty Professionals

Affinity Real Estate Inc. participates in the Regional Multiple Listing Service of Minnesota, Inc Broker Reciprocity (sm) program, allowing us to display other broker's listings on our website. All properties are subject to prior sale, change or withdrawal.

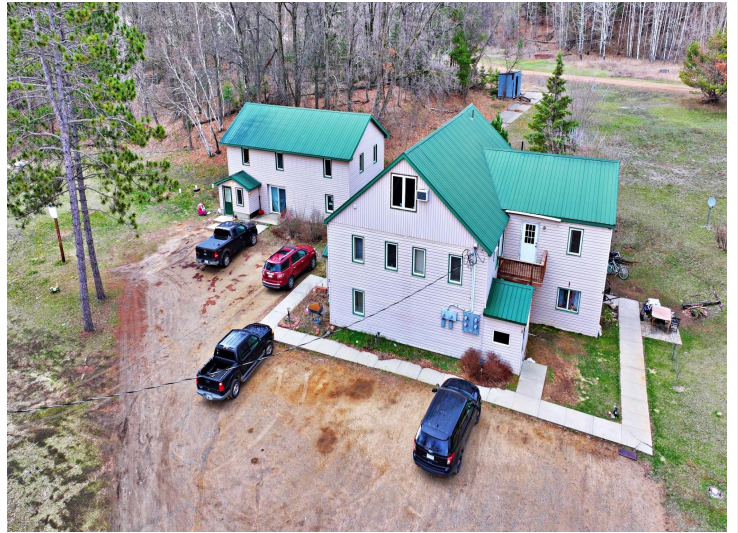


Call Affinity Real Estate  
**218-237-3333**  
[info@affinityrealestate.com](mailto:info@affinityrealestate.com)



Affinity Real Estate - 600 Park Avenue South - Park Rapids MN 56470





website: [www.AffinityRealEstate.com](http://www.AffinityRealEstate.com) | email: [info@affinityrealestate.com](mailto:info@affinityrealestate.com) | office: 218-237-3333 | fax: 218-237-3377



**\$515,000**  
 MLS 6520698 Commercial  
 18894 Estate Drive  
 Park Rapids MN 56470





website: [www.AffinityRealEstate.com](http://www.AffinityRealEstate.com) | email: [info@affinityrealestate.com](mailto:info@affinityrealestate.com) | office: 218-237-3333 | fax: 218-237-3377



**\$515,000**  
MLS 6520698 Commercial  
18894 Estate Drive  
Park Rapids MN 56470