



MLS 6508133 Commercial

\$1,200,000

7717 Lake May Rd NW
Akeley MN 56433

(Active)

Description:

RV Dealership with Residential Haven! Here's your chance to acquire an extraordinary property just on the outskirts of Walker that has a well-known presence. This full-service company is a new and used recreational vehicle RV dealership that sells a variety of RV types, including travel trailers, motorhomes, 5th wheels, park trailers, toy haulers and more. It also sells related parts and provides maintenance services. Current owner operates from a 2,016 sq ft office/retail space and heated 44'x72' shop with 16' sidewalls and 6" concrete floor. Additionally, there are also 7,232 sq ft of insulated storage buildings that have cement floors as well as 3 RV hook up sites. Included in this exceptional package is a magnificent 4,984 sq ft home, featuring 3 bedrooms, 5 bathrooms, and a 2-stall attached garage. This impressive property sits on 11.21 beautiful, wooded acres with gorgeous mature pine trees and easy access to town amenities while reveling in the tranquility of rural living.

Additional Details:

Taxes (unreported)
Taxes with Assessments (unreported)

Driving Directions:



Listed By:
Bill Hansen Realty/Walker

Affinity Real Estate Inc. participates in the Regional Multiple Listing Service of Minnesota, Inc Broker Reciprocity (sm) program, allowing us to display other broker's listings on our website. All properties are subject to prior sale, change or withdrawal.



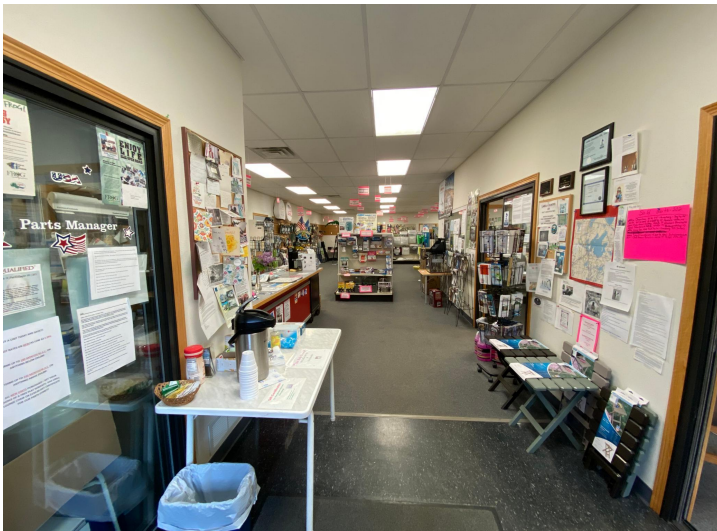
Call Affinity Real Estate

218-237-3333

info@affinityrealestate.com



Affinity Real Estate - 600 Park Avenue South - Park Rapids MN 56470



website: www.AffinityRealEstate.com | email: info@affinityrealestate.com | office: 218-237-3333 | fax:218-237-3377



\$1,200,000
MLS 6508133 Commercial
7717 Lake May Rd NW
Akeley MN 56433



website: www.AffinityRealEstate.com | email: info@affinityrealestate.com | office: 218-237-3333 | fax:218-237-3377

Affinity
REAL ESTATE INC

\$1,200,000
MLS 6508133 Commercial
7717 Lake May Rd NW
Akeley MN 56433



website: www.AffinityRealEstate.com | email: info@affinityrealestate.com | office: 218-237-3333 | fax:218-237-3377



\$1,200,000
MLS 6508133 Commercial
7717 Lake May Rd NW
Akeley MN 56433



website: www.AffinityRealEstate.com | email: info@affinityrealestate.com | office: 218-237-3333 | fax:218-237-3377



\$1,200,000
MLS 6508133 Commercial
7717 Lake May Rd NW
Akeley MN 56433



website: www.AffinityRealEstate.com | email: info@affinityrealestate.com | office: 218-237-3333 | fax:218-237-3377



\$1,200,000
MLS 6508133 Commercial
7717 Lake May Rd NW
Akeley MN 56433



website: www.AffinityRealEstate.com | email: info@affinityrealestate.com | office: 218-237-3333 | fax: 218-237-3377

Affinity
REAL ESTATE INC

\$1,200,000
MLS 6508133 Commercial
7717 Lake May Rd NW
Akeley MN 56433



website: www.AffinityRealEstate.com | email: info@affinityrealestate.com | office: 218-237-3333 | fax:218-237-3377

Affinity
REAL ESTATE INC

\$1,200,000
MLS 6508133 Commercial
7717 Lake May Rd NW
Akeley MN 56433



website: www.AffinityRealEstate.com | email: info@affinityrealestate.com | office: 218-237-3333 | fax:218-237-3377

Affinity
REAL ESTATE INC

\$1,200,000
MLS 6508133 Commercial
7717 Lake May Rd NW
Akeley MN 56433



website: www.AffinityRealEstate.com | email: info@affinityrealestate.com | office: 218-237-3333 | fax:218-237-3377

Affinity
REAL ESTATE INC

\$1,200,000
MLS 6508133 Commercial
7717 Lake May Rd NW
Akeley MN 56433



website: www.AffinityRealEstate.com | email: info@affinityrealestate.com | office: 218-237-3333 | fax:218-237-3377

Affinity
REAL ESTATE INC

\$1,200,000
MLS 6508133 Commercial
7717 Lake May Rd NW
Akeley MN 56433



website: www.AffinityRealEstate.com | email: info@affinityrealestate.com | office: 218-237-3333 | fax:218-237-3377

Affinity
REAL ESTATE INC

\$1,200,000
MLS 6508133 Commercial
7717 Lake May Rd NW
Akeley MN 56433



website: www.AffinityRealEstate.com | email: info@affinityrealestate.com | office: 218-237-3333 | fax:218-237-3377

Affinity
REAL ESTATE INC

\$1,200,000
MLS 6508133 Commercial
7717 Lake May Rd NW
Akeley MN 56433



website: www.AffinityRealEstate.com | email: info@affinityrealestate.com | office: 218-237-3333 | fax:218-237-3377



\$1,200,000
MLS 6508133 Commercial
7717 Lake May Rd NW
Akeley MN 56433