



MLS 6494763 Commercial

\$549,900

28021 County 4
Park Rapids MN 56470

(Active)

Description:

Welcome to Emmaville, a thriving business and a piece of Northern MN History. This opportunity includes the gas station and convenience store, vintage bar, popular cafe, newly remodeled 4-unit Motel and an 8-site seasonal RV campground. Additionally, a 48 x 48 storage facility for boats and other toys and a 30 x 48 heated shop. Conveniently attached to the store is a 3 bed, 1 bath living area. Now is your chance to be part of historic Emmaville and take it into the future with your vision!

Additional Details:

Taxes (unreported)
Taxes with Assessments (unreported)

Driving Directions:



Listed By:
Affinity Real Estate Inc.

Affinity Real Estate Inc. participates in the Regional Multiple Listing Service of Minnesota, Inc Broker Reciprocity (sm) program, allowing us to display other broker's listings on our website. All properties are subject to prior sale, change or withdrawal.



Call Affinity Real Estate
218-237-3333
info@affinityrealestate.com



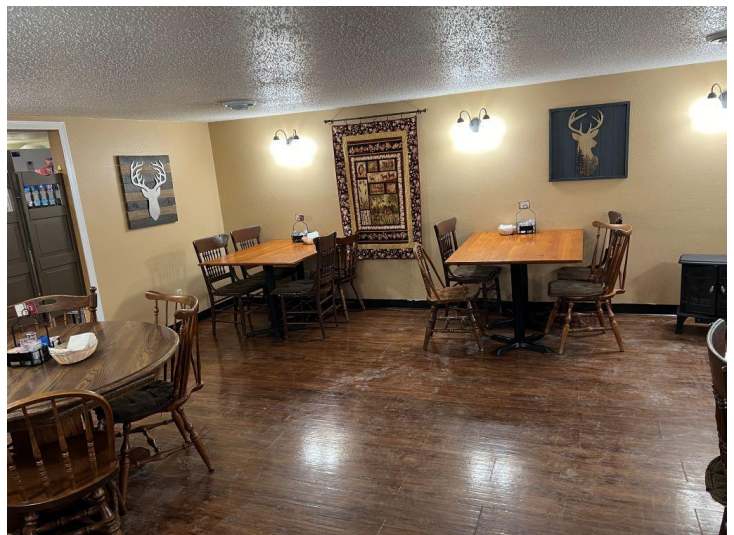
Affinity Real Estate - 600 Park Avenue South - Park Rapids MN 56470



website: www.AffinityRealEstate.com | email: info@affinityrealestate.com | office: 218-237-3333 | fax:218-237-3377



\$549,900
MLS 6494763 Commercial
28021 County 4
Park Rapids MN 56470



website: www.AffinityRealEstate.com | email: info@affinityrealestate.com | office: 218-237-3333 | fax:218-237-3377

Affinity
REAL ESTATE INC

\$549,900
MLS 6494763 Commercial
28021 County 4
Park Rapids MN 56470



website: www.AffinityRealEstate.com | email: info@affinityrealestate.com | office: 218-237-3333 | fax: 218-237-3377

Affinity
REAL ESTATE INC

\$549,900
MLS 6494763 Commercial
28021 County 4
Park Rapids MN 56470



website: www.AffinityRealEstate.com | email: info@affinityrealestate.com | office: 218-237-3333 | fax:218-237-3377

Affinity
REAL ESTATE INC

\$549,900
MLS 6494763 Commercial
28021 County 4
Park Rapids MN 56470



website: www.AffinityRealEstate.com | email: info@affinityrealestate.com | office: 218-237-3333 | fax:218-237-3377



\$549,900
MLS 6494763 Commercial
28021 County 4
Park Rapids MN 56470