

MLS 6474311 Commercial

\$123,000

25296 Melissa S Drive
Detroit Lakes MN 56501

(Active)

Description:

OWN YOUR STORAGE UNIT!

To be built- Unit #10.

30' X 64' storage unit conveniently located between US Highway 59 & Co Highway 17 along South Melissa Drive. Great location less than a mile from Lake Melissa and Seven Sisters Spirits! Construction Specs: post type building, 3 Ply Columns, 2x6 – 8' OC, factory engineered trusses 4' OC (42-4-6 loading), 12' sidewalls with vaulted interior ceiling approx. 14'-8" at center, high tensile steel exterior, 24" soffit system w/ vented ridge, 12'x12' OH door w/ opener, (1) 3' service door, 4" concrete floor w/ center drain, 2x8 treated skirt board, 2x12 double top plate, 2x4 roof purlins 24" OC.

Additional Details:

Taxes (unreported)

Taxes with Assessments (unreported)

Driving Directions:



Listed By:
Counselor Realty of Detroit Lakes

Affinity Real Estate Inc. participates in the Regional Multiple Listing Service of Minnesota, Inc Broker Reciprocity (sm) program, allowing us to display other broker's listings on our website. All properties are subject to prior sale, change or withdrawal.



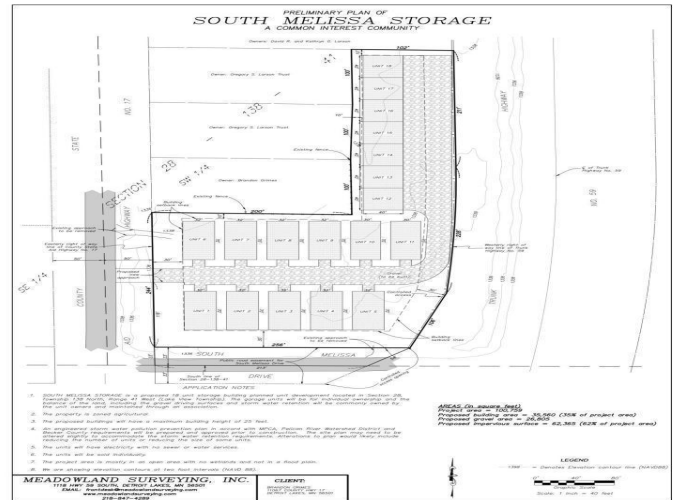
Call Affinity Real Estate

218-237-3333

info@affinityrealestate.com



Affinity Real Estate - 600 Park Avenue South - Park Rapids MN 56470



website: www.AffinityRealEstate.com | email: info@affinityrealestate.com | office: 218-237-3333 | fax: 218-237-3377



\$123,000
 MLS 6474311 Commercial
 25296 Melissa S Drive
 Detroit Lakes MN 56501