

MLS 6474289 Commercial

**\$123,000**

25296 Melissa S Drive  
Detroit Lakes MN 56501

(Active)

**Description:**

**OWN YOUR STORAGE UNIT!**

To be built Unit #1.

32' X 64' storage unit conveniently located between US Highway 59 & Co Highway 17 along South Melissa Drive. Great location less than a mile from Lake Melissa and Seven Sisters Spirits! South Melissa Storage Construction Specs: post type building, 3 Ply Columns, 2x6 – 8' OC, factory engineered trusses 4' OC (42-4-6 loading), 12' sidewalls with vaulted interior ceiling approx. 14'-8" at center, high tensile steel exterior, 24" soffit system w/ vented ridge, 12'x12' OH door w/ opener, (1) 3' service door, 4" concrete floor w/ center drain, 2x8 treated skirt board, 2x12 double top plate, 2x4 roof purlins 24" OC.

**Additional Details:**

Taxes (unreported)

Taxes with Assessments (unreported)

**Driving Directions:**



Listed By:  
Counselor Realty of Detroit Lakes

Affinity Real Estate Inc. participates in the Regional Multiple Listing Service of Minnesota, Inc Broker Reciprocity (sm) program, allowing us to display other broker's listings on our website. All properties are subject to prior sale, change or withdrawal.



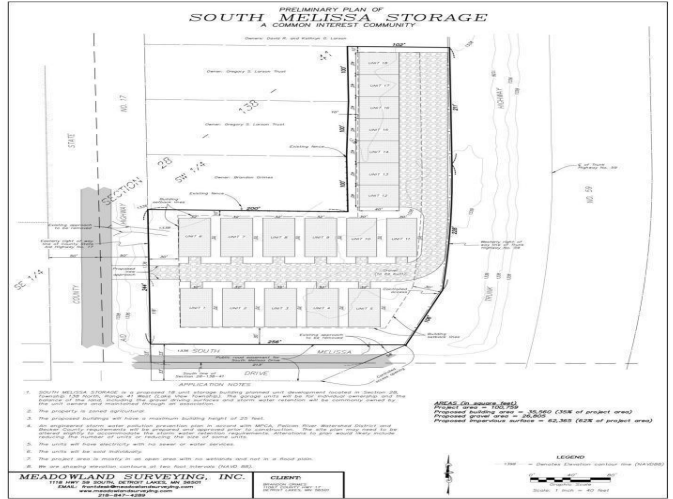
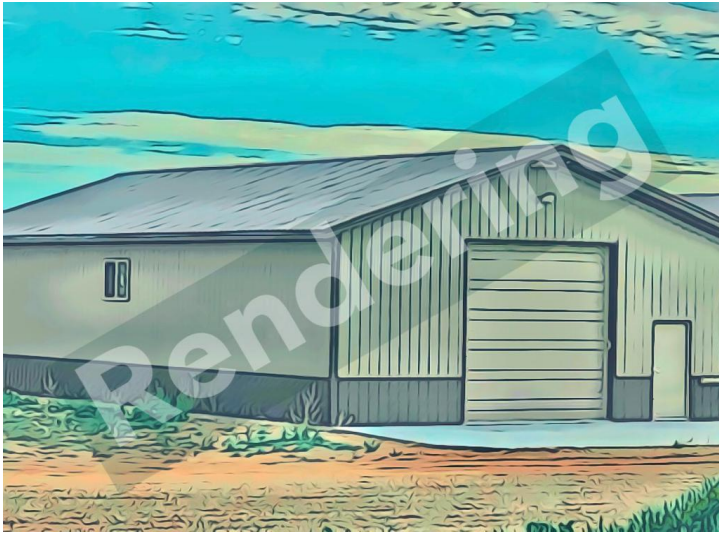
**Call Affinity Real Estate**

**218-237-3333**

**info@affinityrealestate.com**



**Affinity Real Estate - 600 Park Avenue South - Park Rapids MN 56470**



website: [www.AffinityRealEstate.com](http://www.AffinityRealEstate.com) | email: [info@affinityrealestate.com](mailto:info@affinityrealestate.com) | office: 218-237-3333 | fax: 218-237-3377



**\$123,000**  
 MLS 6474289 Commercial  
 25296 Melissa S Drive  
 Detroit Lakes MN 56501