



MLS 6468042 Commercial

**\$635,000**

2301 Ash Avenue NW  
Bemidji MN 56601

(Active)



**Description:**

Honesty, Reliability and Professionalism is how HRP was Built and how it is run. A well run business that is profitable and has huge potential. They Sell, Service and Repair most gas operating equipment. From Lawn Equipment, Powersport, Snow throwers, Chair Saws and a whole lot more. Need a tune up, a part or some great advise HRP is the place. HRP has had the same owner since 2012. Business, Business Name, Customer Base, Building, Inventory and fixtures are included. Great Corner lot easy to load and unload.

**Additional Details:**

Taxes (unreported)  
Taxes with Assessments (unreported)

**Driving Directions:**



Listed By:  
Edina Realty, Inc.

Affinity Real Estate Inc. participates in the Regional Multiple Listing Service of Minnesota, Inc Broker Reciprocity (sm) program, allowing us to display other broker's listings on our website. All properties are subject to prior sale, change or withdrawal.



Call Affinity Real Estate

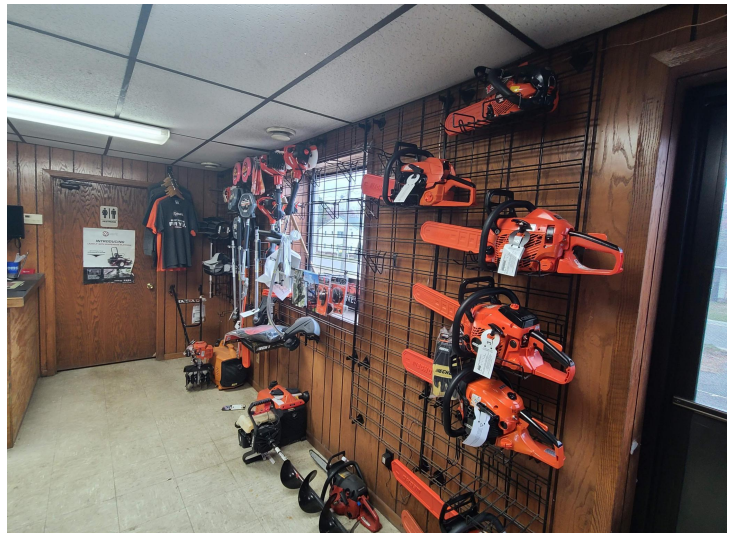
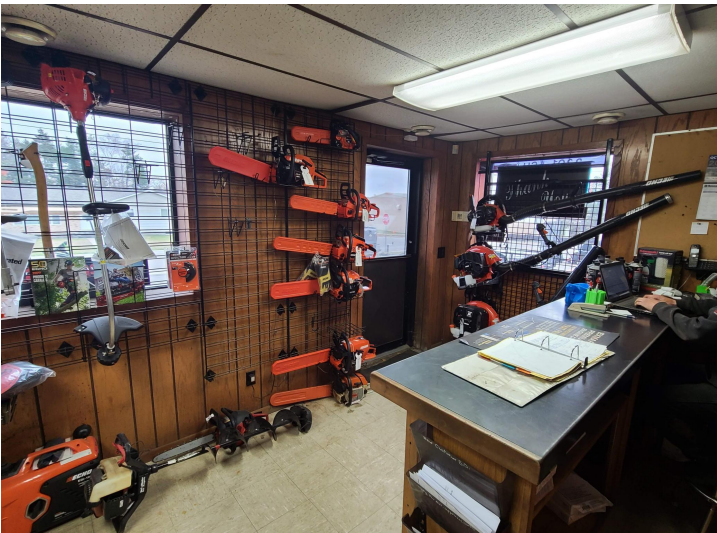
**218-237-3333**

[info@affinityrealestate.com](mailto:info@affinityrealestate.com)



Affinity Real Estate - 600 Park Avenue South - Park Rapids MN 56470



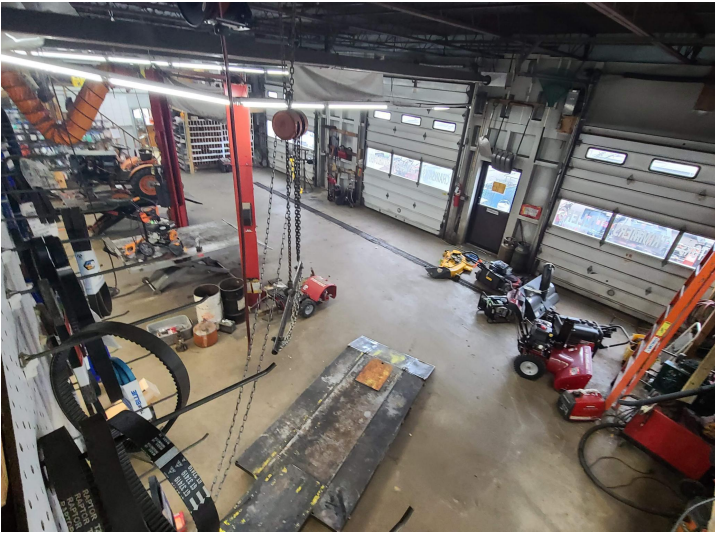
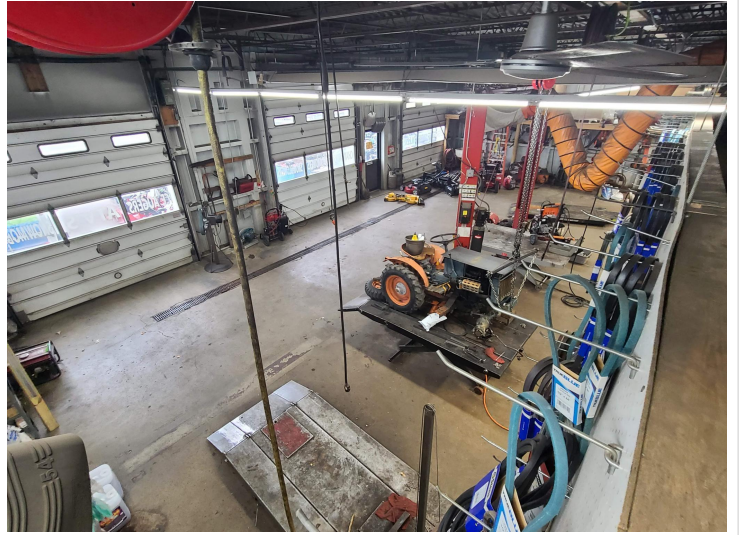
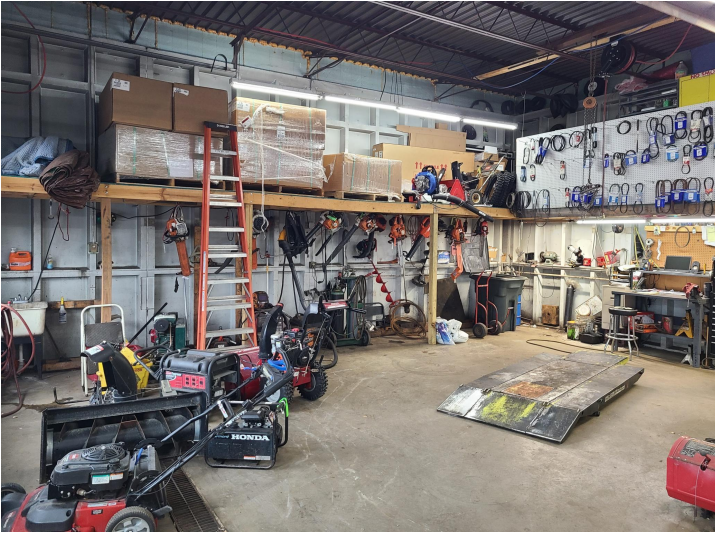


website: [www.AffinityRealEstate.com](http://www.AffinityRealEstate.com) | email: [info@affinityrealestate.com](mailto:info@affinityrealestate.com) | office: 218-237-3333 | fax:218-237-3377



**\$635,000**  
MLS 6468042 Commercial  
2301 Ash Avenue NW  
Bemidji MN 56601



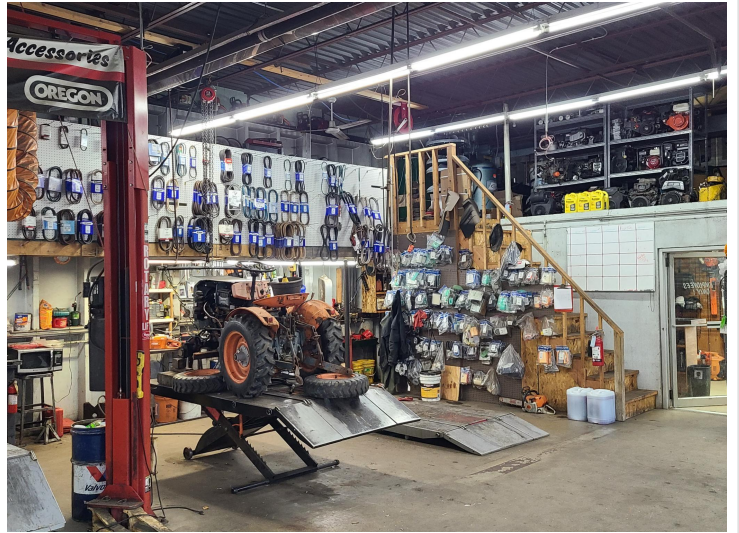


website: [www.AffinityRealEstate.com](http://www.AffinityRealEstate.com) | email: [info@affinityrealestate.com](mailto:info@affinityrealestate.com) | office: 218-237-3333 | fax:218-237-3377

**Affinity**  
REAL ESTATE INC

**\$635,000**  
MLS 6468042 Commercial  
2301 Ash Avenue NW  
Bemidji MN 56601





website: [www.AffinityRealEstate.com](http://www.AffinityRealEstate.com) | email: [info@affinityrealestate.com](mailto:info@affinityrealestate.com) | office: 218-237-3333 | fax:218-237-3377



**\$635,000**  
MLS 6468042 Commercial  
2301 Ash Avenue NW  
Bemidji MN 56601