



MLS 6408547 Commercial

\$699,900

220 Crocus Hill Street E
Park Rapids MN 56470

(Active)

Description:

Well established Automotive Repair Business in Park Rapids, MN. Comprised of 6,800 sq. ft. shop building with 4 bays that offer 14' doors, nicely finished office space and customer waiting area. Room to expand with 5.45 acres of land on the edge of town with city utilities.

Additional Details:

Taxes (unreported)

Taxes with Assessments (unreported)

Driving Directions:



Listed By:
Wolff & Simon Real Estate

Affinity Real Estate Inc. participates in the Regional Multiple Listing Service of Minnesota, Inc Broker Reciprocity (sm) program, allowing us to display other broker's listings on our website. All properties are subject to prior sale, change or withdrawal.



Call Affinity Real Estate

218-237-3333

info@affinityrealestate.com



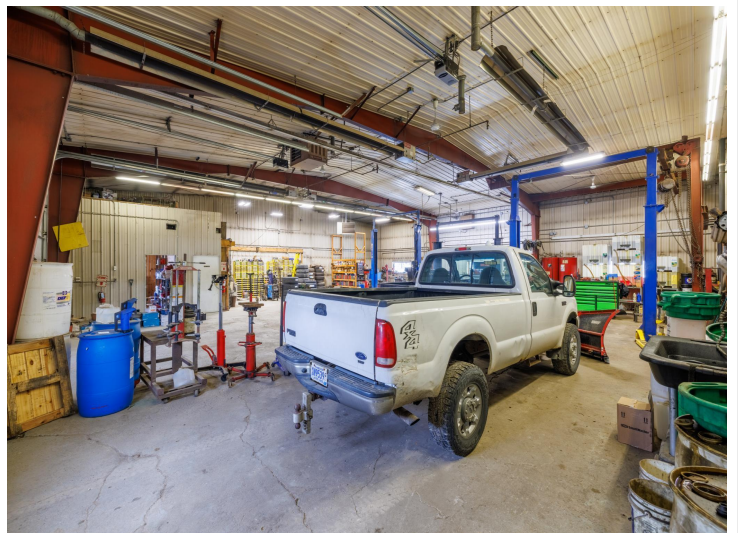
Affinity Real Estate - 600 Park Avenue South - Park Rapids MN 56470



website: www.AffinityRealEstate.com | email: info@affinityrealestate.com | office: 218-237-3333 | fax: 218-237-3377



\$699,900
 MLS 6408547 Commercial
 220 Crocus Hill Street E
 Park Rapids MN 56470



website: www.AffinityRealEstate.com | email: info@affinityrealestate.com | office: 218-237-3333 | fax: 218-237-3377

Affinity
REAL ESTATE INC

\$699,900
MLS 6408547 Commercial
220 Crocus Hill Street E
Park Rapids MN 56470



website: www.AffinityRealEstate.com | email: info@affinityrealestate.com | office: 218-237-3333 | fax: 218-237-3377



\$699,900
 MLS 6408547 Commercial
 220 Crocus Hill Street E
 Park Rapids MN 56470



website: www.AffinityRealEstate.com | email: info@affinityrealestate.com | office: 218-237-3333 | fax:218-237-3377



\$699,900
MLS 6408547 Commercial
220 Crocus Hill Street E
Park Rapids MN 56470