



MLS 5625137 Land

\$13,900

2.52 acres

5 Fenwick
Park Rapids MN 56470

(Active)

Description:

Country Living and minutes from Park Rapids and all of the conveniences. Close to Fish Hook Lake and Headwaters Golf Course and recreational trails. Variety of pines and hardwoods on this 2.52 acres parcel. Perfect time to invest in your dream home. \$13,900. Adjoining property also available if your looking for even a bigger lot.

Additional Details:

Lot Acres	2.520
School District	309 - Park Rapids
Taxes	\$77
Taxes with Assessments	\$77
Tax Year	2020

Additional Features:

Driving Directions:

From 71/34 go 2.5 miles to R on CR 18, go 1.1 miles turn L on Fenwick Circle. Follow circle to marked lots.



Listed By:
Affinity Real Estate Inc.

Affinity Real Estate Inc. participates in the Regional Multiple Listing Service of Minnesota, Inc Broker Reciprocity (sm) program, allowing us to display other broker's listings on our website. All properties are subject to prior sale, change or withdrawal.



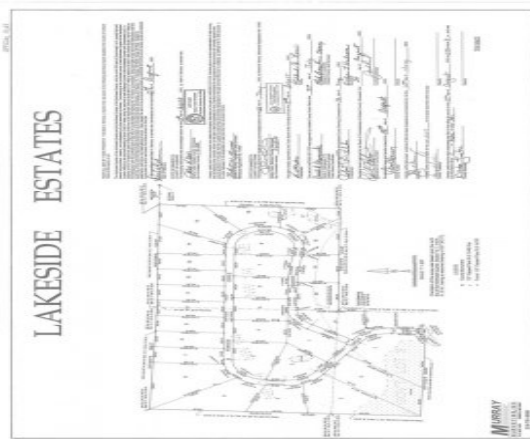
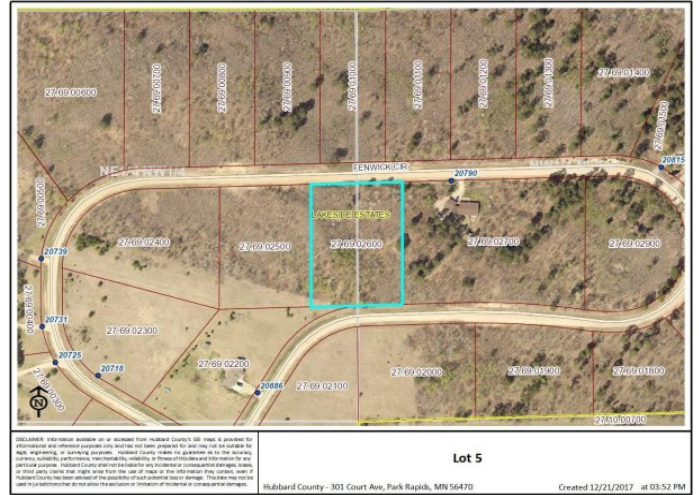
Call Affinity Real Estate

218-237-3333

info@affinityrealestate.com



Affinity Real Estate - 600 Park Avenue South - Park Rapids MN 56470



website: www.AffinityRealEstate.com | email: info@affinityrealestate.com | office: 218-237-3333 | fax: 218-237-3377



\$13,900
MLS 5625137 Land
5 Fenwick
Park Rapids MN 56470